

MOSS and LICHEN

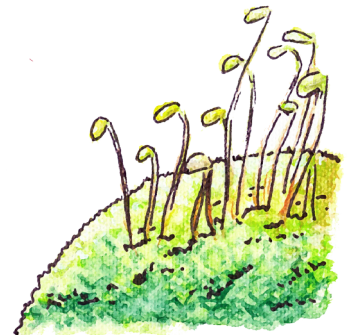
Some Moss Types



SPHAGNUM MOSS



GLITTERING WOOD-MOSS

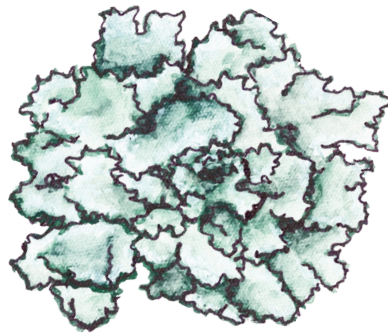


SWAN'S-NECK THYME-MOSS

Basic Lichen Shapes



CRUSTY (CRUSTOSE)



LEAFY (FOLIOSE)



SHRUBBY (FRUTICOSE)

NATURE is NEAT

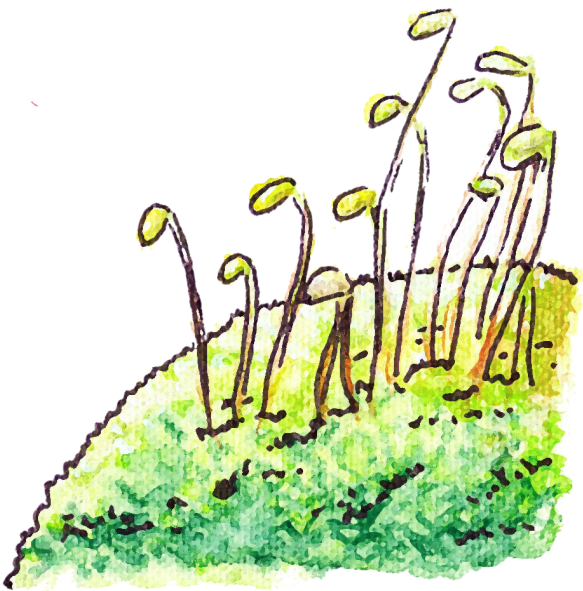
Mosses are plants that like to grow in wet and shady areas. They have simple leaves but no seeds or flowers. Lichens are made up of two organisms – fungus and algae – that live together as one. Lichens grow all over the world, in many different environments.



SPHAGNUM MOSS



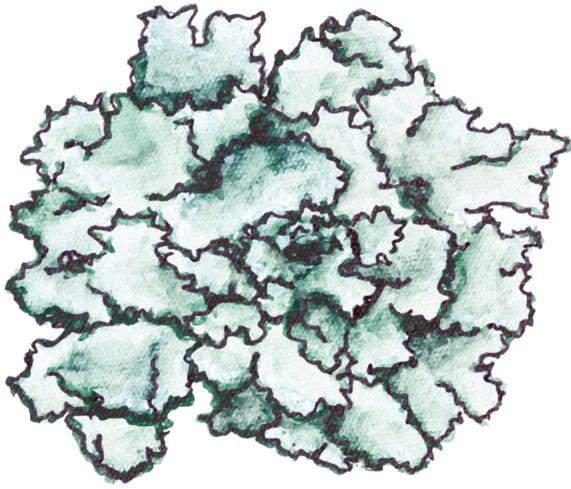
GLITTERING WOOD-MOSS



SWAN'S-NECK THYME-MOSS



CRUSTY (CRUSTOSE) LICHEN



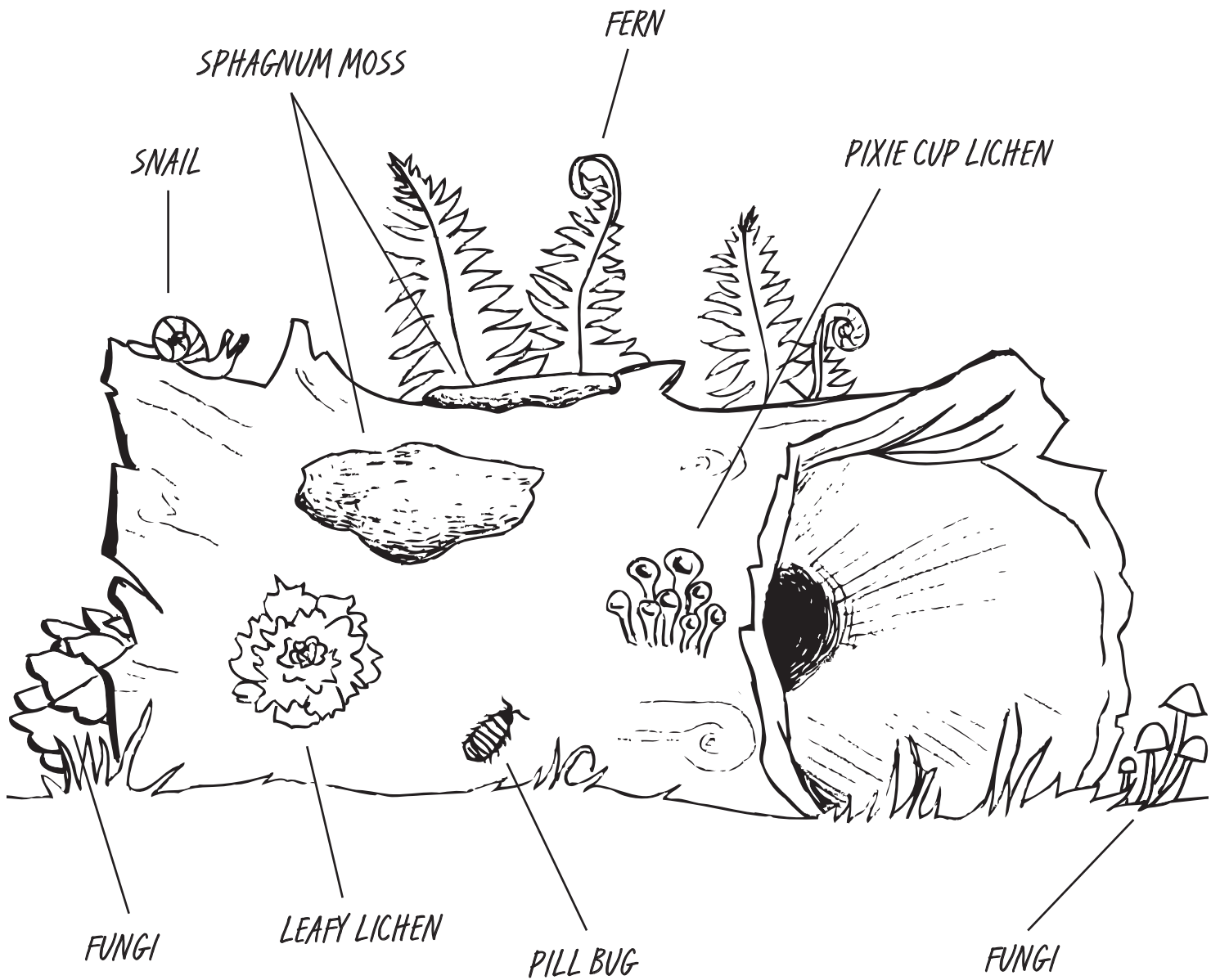
LEAFY (FOLIOSE) LICHEN



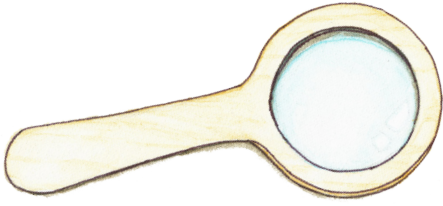
SHRUBBY (FRUTICOSE) LICHEN

THE FOREST FLOOR

Coloring Page



Date: _____



MY OBSERVATIONS

Sketch a Picture, Map or Diagram

What did you see? _____

How many did you see? _____

Where did you see it? _____

What else did you notice? _____